

Lessons Learned from Implementation of a Risk Mitigation Assessment Program

Presentation Team

- Christine Packard, Assistant VP, Enterprise Risk Management, University of Massachusetts President's Office
- Olivia Watson, Analyst, Enterprise Risk Management, University of Massachusetts President's Office

Objectives

- Learn how to integrate a risk mitigation assessment program into your ERM program
- Leverage lessons learned from the implementation of a risk mitigation assessment program
- Evaluate how a risk mitigation assessment program can enhance your ERM Program

Agenda

- University of Massachusetts System Overview
- Systemwide Enterprise Risk Management Program Overview
- Risk Assessment Process and Systemwide Risk Registry
- Risk Mitigation Assessment and MATRX
- Influence of Mitigation Assessment Data
- Conclusion and Take Aways
- Questions?

Overview: University of Massachusetts System

About UMass

Ranking	#1 Public University in New England
Campuses	Five undergraduate & graduate
Students	74,000 students
New Graduates	19,000 annually
Alumni	<ul style="list-style-type: none">• 330,000 in MA• 530,000 worldwide
Employees	<ul style="list-style-type: none">• 24,000 employees• 3rd largest employer in MA
Research	<p>\$813M</p> <ul style="list-style-type: none">• 3rd largest in MA• 4th largest in New England
Budget	\$4.1B annually
Economic Impact	\$8.3B across Massachusetts

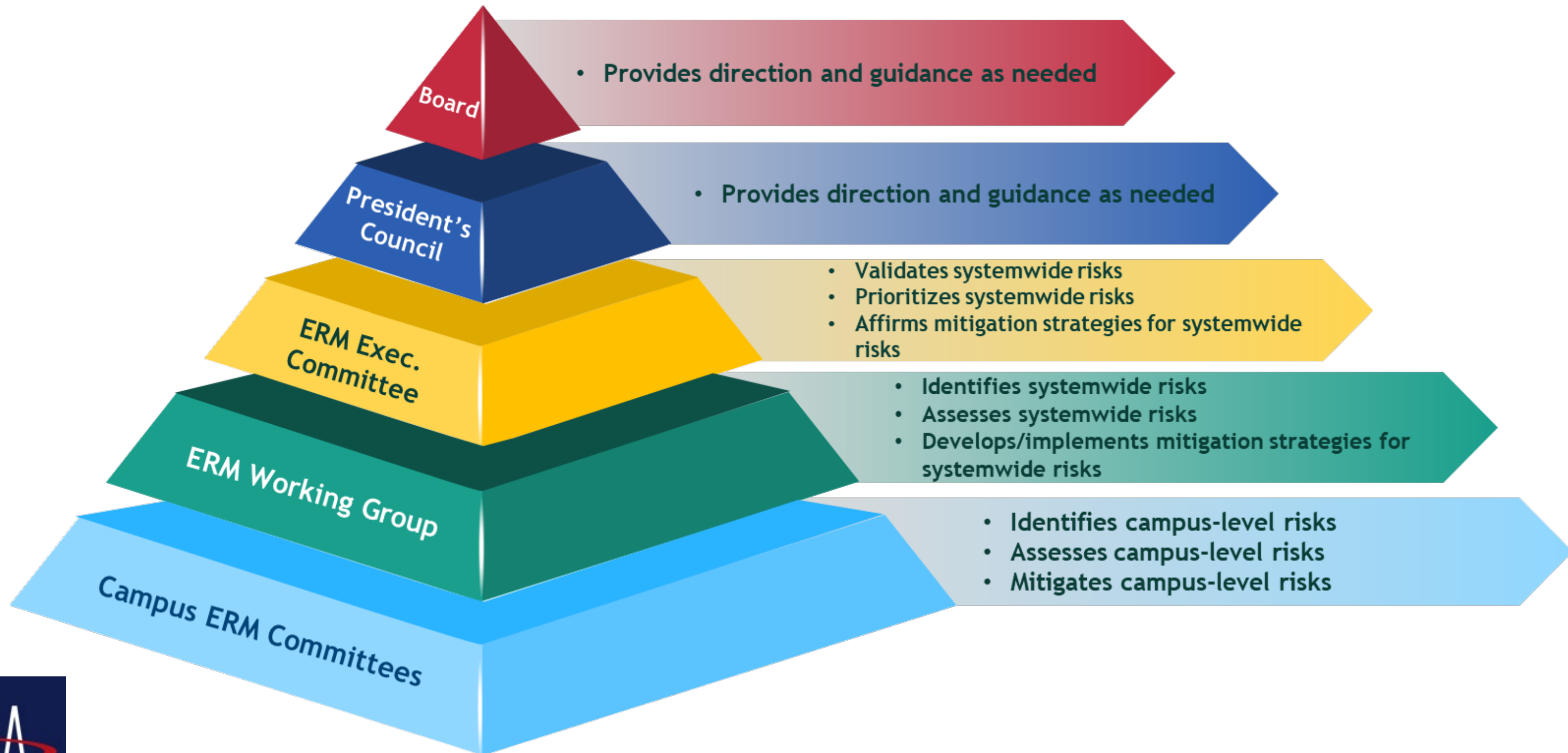


University of
Massachusetts
Amherst



UMass Systemwide Enterprise Risk Management Program

Systemwide ERM Governance Structure



Two-Year Systemwide ERM Program Cycle



How the Systemwide Enterprise Risk Management Program Functions at the University of Massachusetts



- Identify and assess risks with systemwide implications
- Support informed decision-making
 - Transparency of information/activity
 - Normalized review/prioritization of risk
- Facilitate systemwide coordination on risk identification and assessment
- Assist in identifying risk owners
- Facilitate coordination of mitigation activities for crisis response
- Facilitate the assessment of effectiveness of mitigation activities on risk



- Own risk
- Own risk mitigation strategies
- Implement risk mitigation strategies
- Own compliance review or monitoring
- Own campus ERM programs or plans

Risk Assessment Process & Systemwide Risk Registry

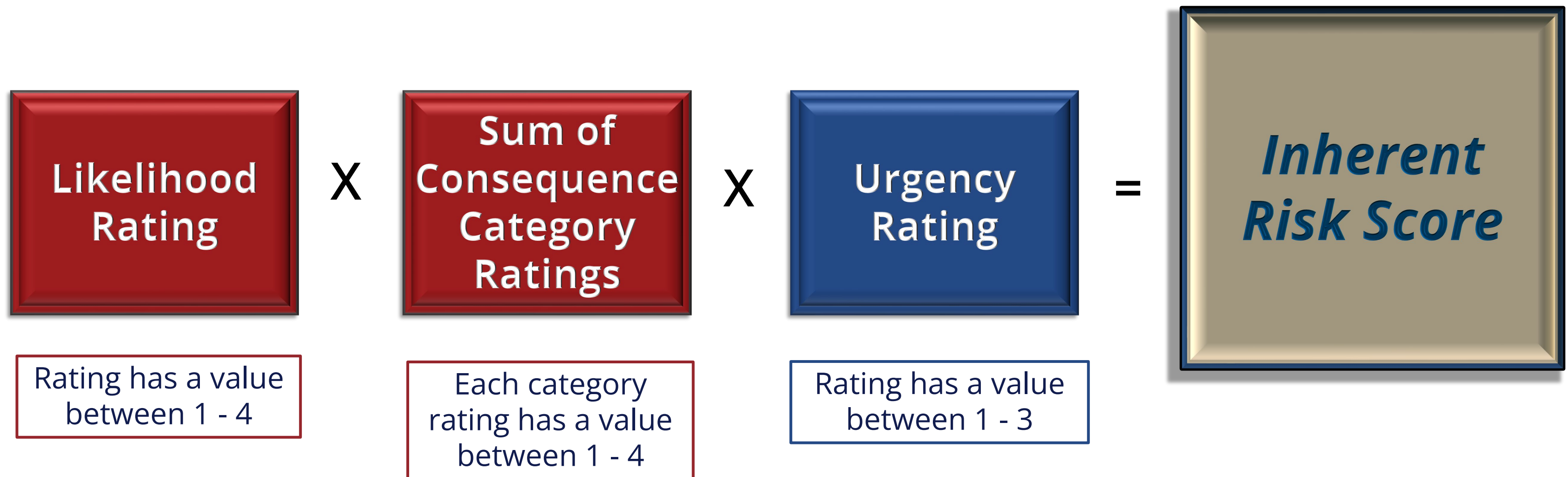
POLL

1. My institution's risk registry is a living document
2. My institution's risk registry collects dust
3. My institution's risk registry is a pipe dream

Risk Assessment Process

- Focused on systemwide impacts
- Evaluates inherent exposure* of the University to the risk
 - Risk assessment does not account for mitigation strategies for likelihood and consequence
- Rates risks across three factors
 - Likelihood *: Could the University system experience this risk?
 - Consequence *: How much would the University system be impacted by this risk?
 - Service/ Operations Disruptions
 - Financial
 - Legal/ Compliance
 - Workforce
 - Reputation
 - Life Safety
 - Urgency: How soon does the University system need to prioritize this risk?
- Generates an Inherent Risk Score for each risk

Inherent Risk Score Calculation



- Assessed by ERM Working Group
- Assessed by ERM Executive Committee

FY2022 Systemwide Risk Registry

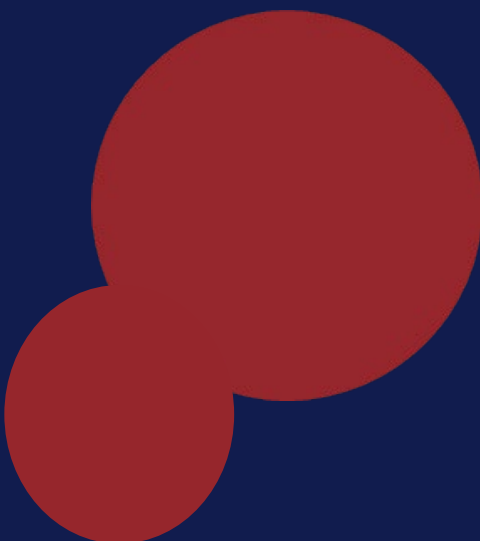
*Since this presentation we have conducted our FY2024 Risk Assessment

■ Priority Risks

Rank	Risk
1	Enrollment
2	Information Security
3	Financial Sustainability
4	Facilities and Deferred Maintenance
5	Student Health & Mental Health Support
6	Vendor Risk Management
7	Attract, Recruit, Retain Faculty and Staff
8	International Activities
9	Information Privacy
10	Diversity, Equity, Inclusion and Accessibility

Rank	Risk
11	All Hazards Planning & Response Capabilities
12	Multi-State Payroll Tax
13	Labor Relations
14	Data Management
15	Research
16	Multi-State Business Tax
17	Sexual Assault Policies & Response Procedures
18	IT Disaster Recovery
19	Continuity Planning
20	Environmental Health, Public Health, & Safety Regulations

Rank	Risk
21	Alcohol and Substance Abuse
22	Crisis Communications
23	Immigration Rules and Regulations
24	Fraud, Waste, and Abuse
25	Uninsured Loss
26	Employment Laws and Regulations
27	NCAA Regulations
28	Policies and Procedures Regarding Minors on Campus
29	Academic Quality and Standards
30	Oversight of Student Organizations



Using Risk Assessment Data

FY22 Risks Ranked Based on Highest Legal/ Compliance Exposure

Listed by highest legal/ compliance exposure, and then by Inherent Risk Score

Information Security
International Activities
Research
Employment Laws & Regulations
Academic Quality & Standards

Facilities & Def. Maintenance
Student Hlth & Mental Hlth Support
Vendor Risk Management
Information Privacy
DEIA
All Hazards Plans & Response Cap.
Multi-State Payroll Tax
Multi-State Business Tax
Sex. Assault Policies & Rspns Proced. ¹⁶
Env. Hlth, Pub. Hlth, & Safety Regs
Alcohol and Substance Abuse
Immigration Rules and Regulations
Fraud, Waste, and Abuse
NCAA Regulations

Financial Sustainability
Attract, Recruit, Retain Faculty/Staff
Labor Relations
IT Disaster Recovery
Continuity Planning
Crisis Communications
Policies/Proced. Minors on Campus
Oversight of Student Organizations
Enrollment
Data Management
Uninsured Loss

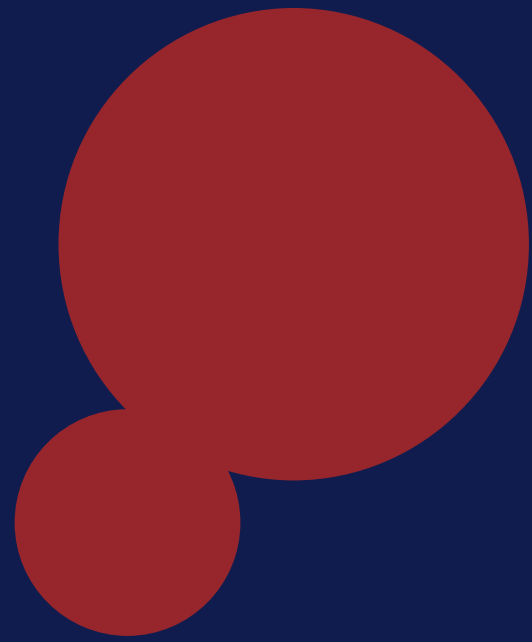
Key

Highest Legal/Compliance Exposure

Medium Legal/Compliance Exposure

Lower Legal/Compliance Exposure





Risk Mitigation Assessment

POLL

1. My institution documents and assesses mitigation/treatment strategies **as part of** the risk assessment process
2. My institution documents and assesses mitigation/treatment strategies **separately from** the risk assessment process
3. My institution does not formally document or assess mitigation/treatment strategies

Goals of the Mitigation Assessment Program

- Document risk mitigation strategies for *transparency*
- *Correlate* assessment of risk mitigation strategies to a risk's assessed inherent risk exposure
- Demonstrate *impact* of mitigation strategies on risk exposure

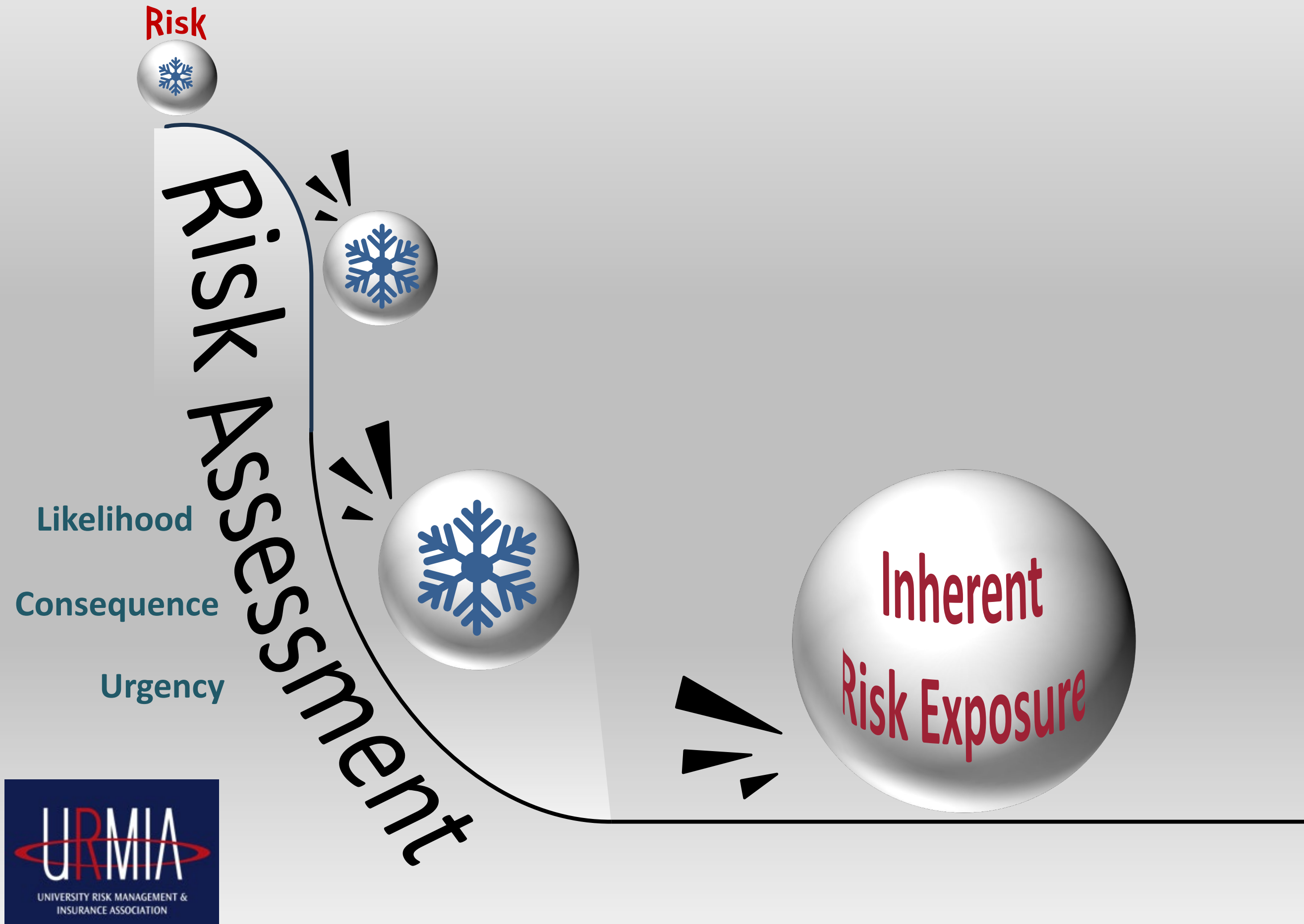
Transparency

- Create a common operating picture for the University system
- Increase awareness of risk and risk mitigation
- Ground-truth the degree of risk exposure

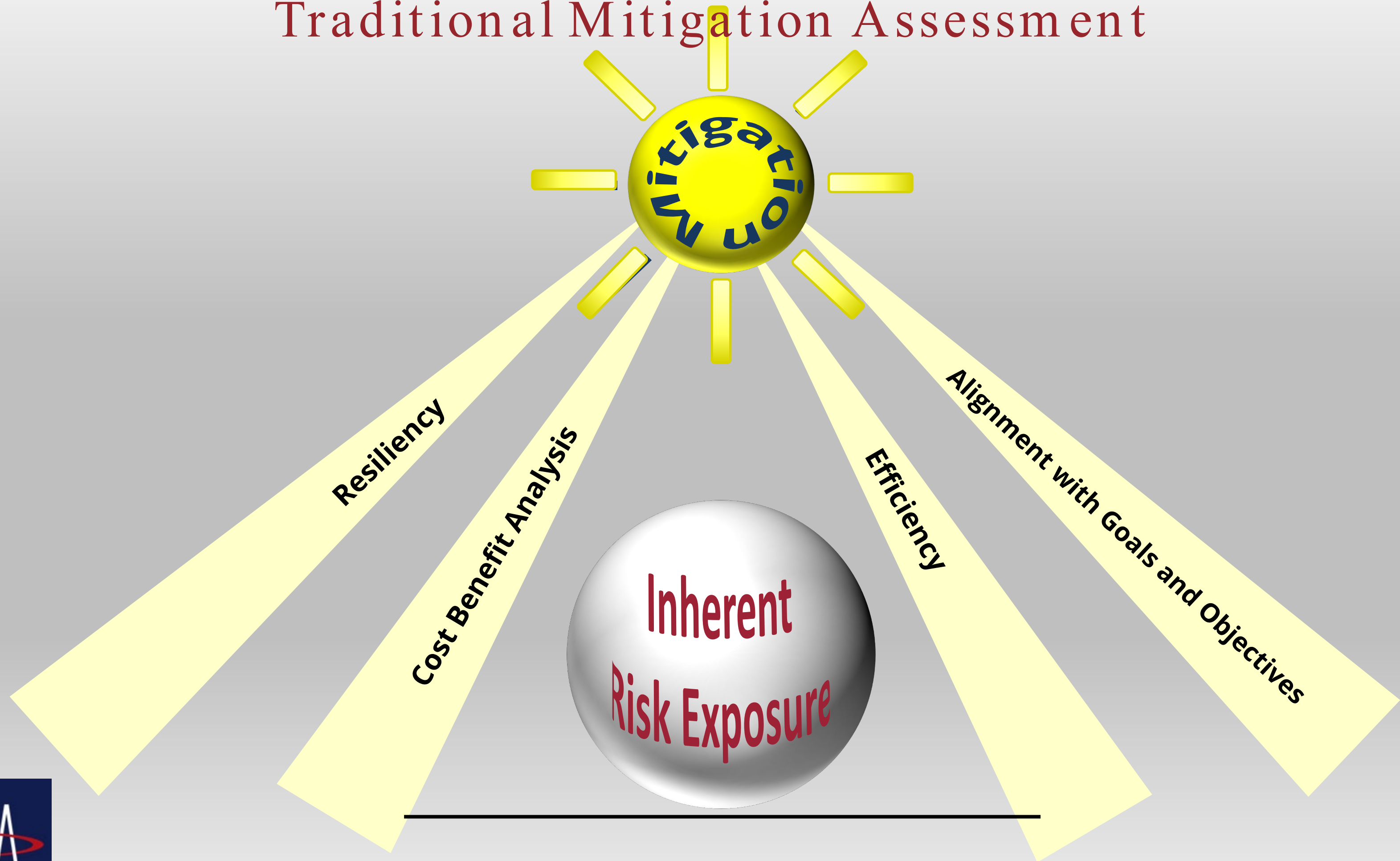
Correlation

- Traditional mitigation assessment considers important organizational factors, but these factors do not directly correlate to risk exposure
- Needed to identify the impacts mitigation measures have in reducing the exposures identified in the risk assessment process

Assessment of Risk Exposure



Traditional Mitigation Assessment



Correlation of UMass Risk Assessment and Mitigation Assessment



Demonstrate Impact of Mitigation Strategies

Individual Effectiveness

Measure the effectiveness of an ***individual*** mitigation strategy on reducing risk exposure

Comparative Effectiveness

Compare the effectiveness of ***multiple*** mitigation strategies on reducing risk exposure

Aggregate Effectiveness

Measure the ***aggregate*** effectiveness of all risk mitigation strategies on reducing risk exposure



UMass Mitigation Assessment Tool for Reducing Risk Exposure

Initial Data Capture

- All data is provided by risk mitigation partner(s) conducting the mitigation assessment
- Members of the ERM Governance Structure help identify partners for each risk

Data Point	Description	Why
Title	Title of mitigation strategy being documented/assessed	Unique Identifier
Description	Brief description of mitigation strategy	Understand what the strategy is and does
Type	<ul style="list-style-type: none"> • Operational: Everyday or regularly occurring activity • Project-based: Initiative or project with finite timeframe 	Understand if strategy is ongoing or timebound
Status	<ul style="list-style-type: none"> • Proposed: Strategy is not yet approved/funded • Planned: Strategy is approved/funded, but not yet implemented • Ongoing: Strategy is underway • Complete: Strategy has concluded 	Determines whether strategy is included in the mitigation assessment calculation
Implementation Level	<ul style="list-style-type: none"> • Fully: Mitigation strategy is fully implemented • Partially: Mitigation strategy is not yet implemented at full capacity • N/A: Not applicable or not yet implemented 	Determines whether weightings are applied to the mitigation assessment calculation

Consequence

What effect does or would the mitigation strategy have on each of the following risk consequence categories?

- Service Disruption, Process Impact on Operations
- Finance
- Legal/Compliance
- Workforce
- Reputation
- Life Safety

Rating	Description
Significant Effect	Greatly reduces the University's exposure in this risk category.
Moderate Effect	Somewhat reduces the University's exposure in this risk category.
Little to No Effect	Neutral - barely or does not reduce the University's exposure in the risk category.
Adverse Effect	Creates additional/increases exposure in the risk category.

Consequence rating value is dependent upon the calculation being generated

- For individual effectiveness calculation, value is assigned based on level
- For aggregate effectiveness calculation are relative to the Inherent consequence rating values for the risk

Likelihood

Does or would this risk mitigation strategy impact the likelihood of the risk occurring?

Rating	Description
Decreases Likelihood	Improves: Mitigation strategy has decreased the likelihood that the risk will occur
No Impact	Neutral: Mitigation strategy has made no impact on the likelihood that the risk will occur
Increases Likelihood	Worsens: Mitigation strategy has increased the likelihood that the risk will occur.

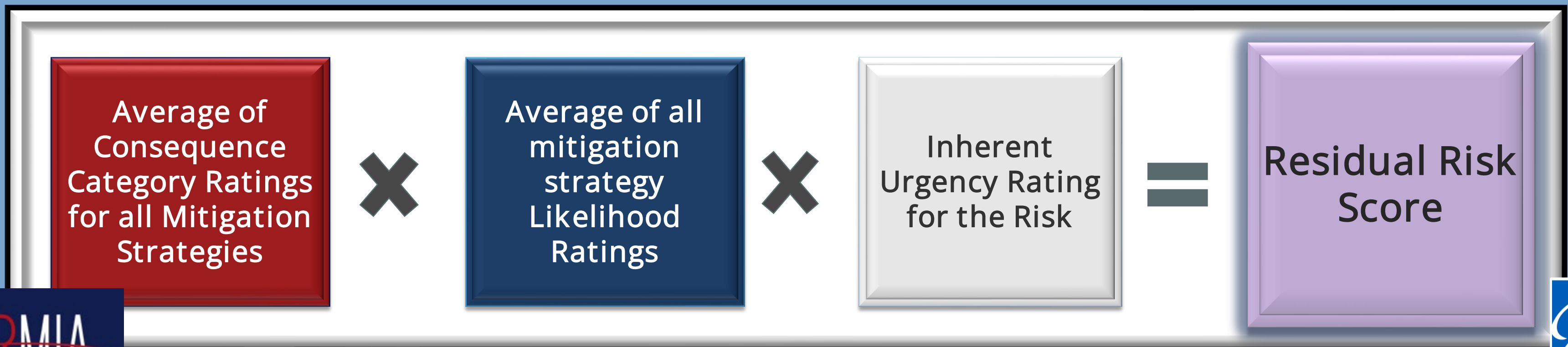
Likelihood rating value is relative to the inherent likelihood rating for both the individual effectiveness calculation and aggregate effectiveness calculation

MITIGATION ASSESSMENT CALCULATIONS

Individual Effectiveness Calculation



Aggregate Effectiveness Calculation



DEMO



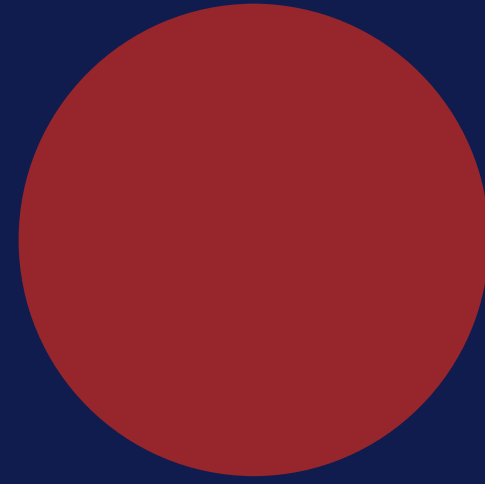
What MATRX Does and Does Not Accomplish



- Provides transparency on risk mitigation strategies
- Demonstrates progress on mitigating risk or depicts areas that may require additional attention
- Enables more robust discussions on risk and risk mitigation
- Demonstrates movement in addressing risk



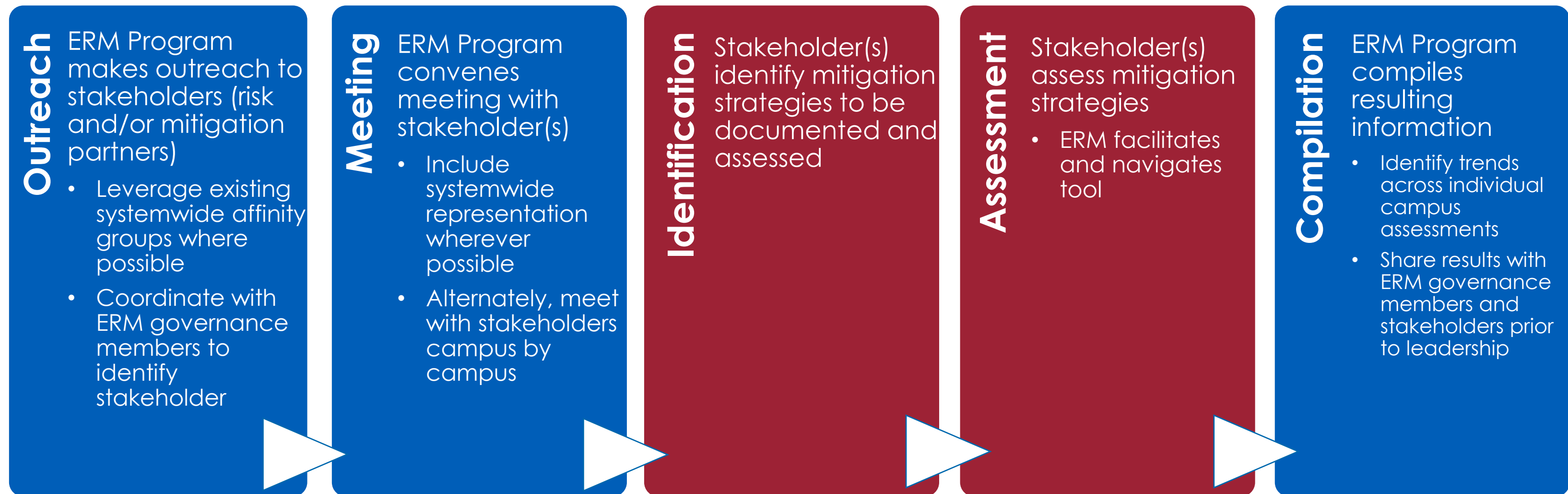
- Does not track key performance indicators
- Does not define risk tolerance
- Does not define specific follow-on actions needed
- Does not conclude satisfaction or dissatisfaction with status of addressing risk



Stakeholder Engagement

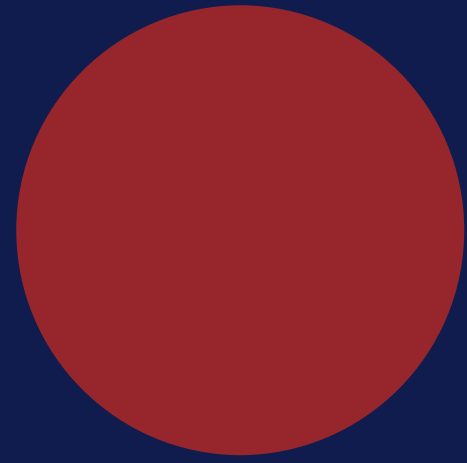


Mitigation Assessment – Stakeholder Engagement Process



ERM

Stakeholders



Mitigation Assessment Data





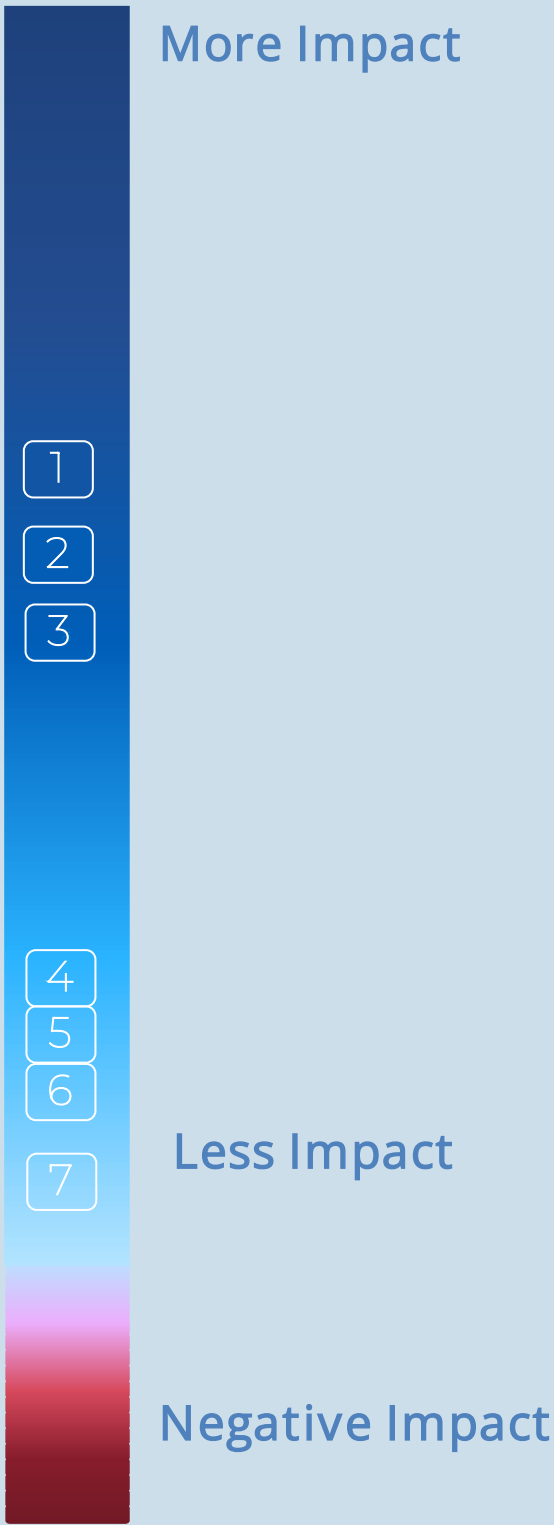
International Activities



Rank	Mitigation Strategy as of June 30, 2023	Systemwide Status
1	Travel Registry	Fully
2	New Travel Policies and Standards	Fully
3	Systemwide International Employment Guidelines	N/A
4	Business Travel and Expense Policy and Standards	Fully
	International Travel Accident and Sickness Services and Insurance	Fully
5	International Tax Advisory Services	Fully
6	International Employment Issues Evaluation	Fully
7	International Hires Pilot	Partially

8 Strategies

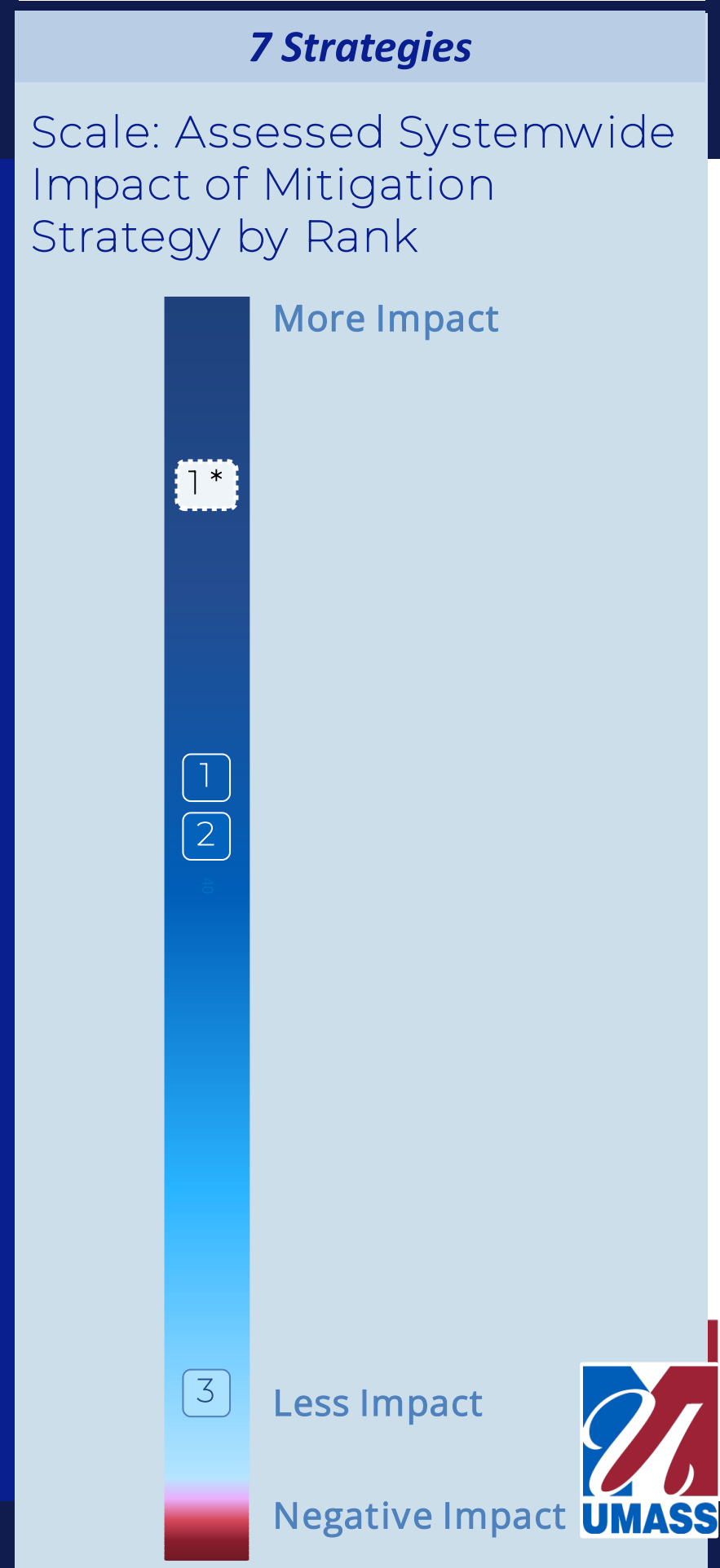
Scale: Assessed Systemwide Impact of Mitigation Strategy by Rank



Facilities & Deferred Maintenance



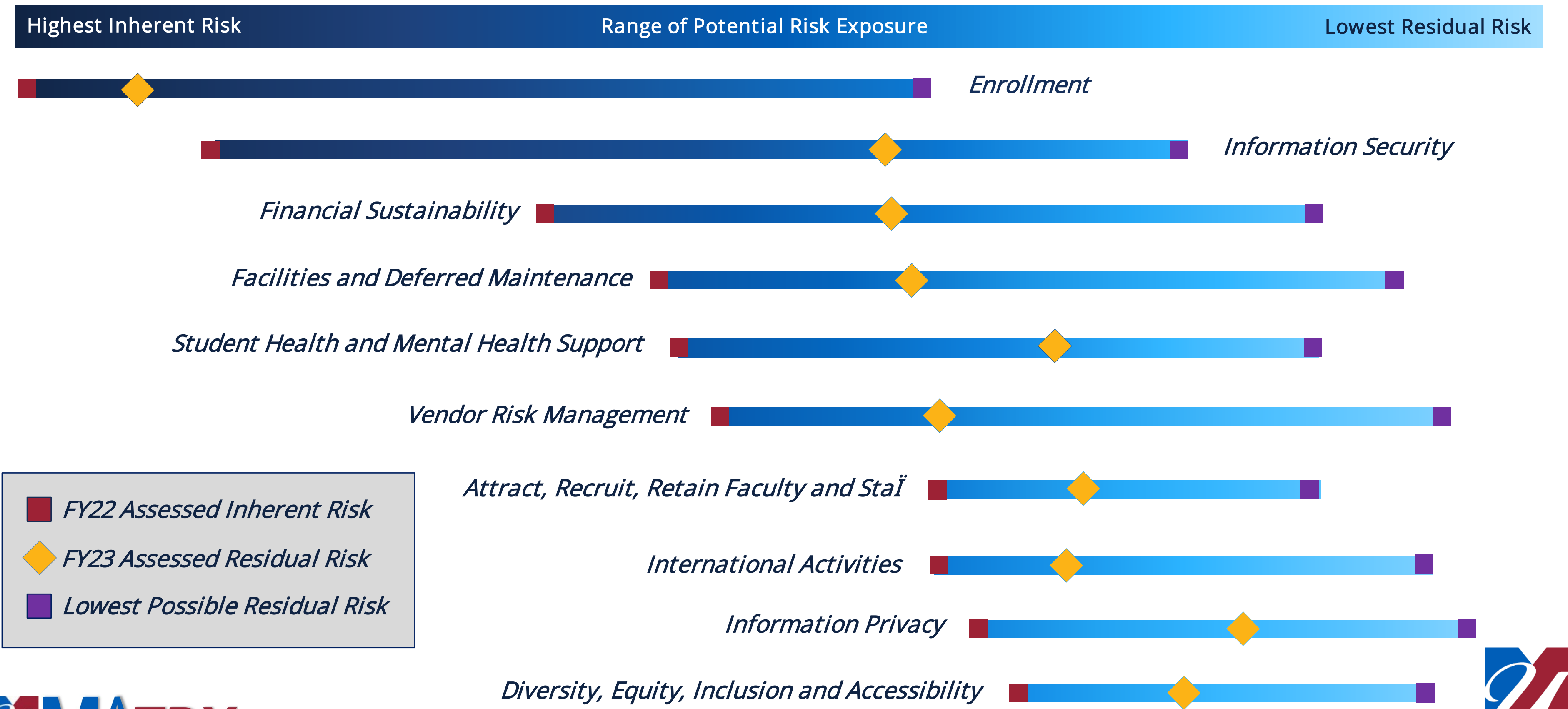
Rank	Mitigation Strategy as of June 30, 2023	Systemwide Status
1	Reaching/Maintaining Keep Up Targets	Partially*
	Reaching/Maintaining Catch Up Targets	Partially*
2	Annual Update of Campus Deferred Maintenance (Gordian)	Fully
	Capital Policy & Standards	Fully
	Reporting – Biannual Capital Plan	Fully
	Reporting – Quarterly Capital Reporting Including Keep Up and Catch Up	Partially
3	Tracking Spending Against DCAMM Contracts	Partially



* These strategies are currently not fully implemented. If these strategies were fully implemented. See scale.



Movement in Reducing Risk Exposure



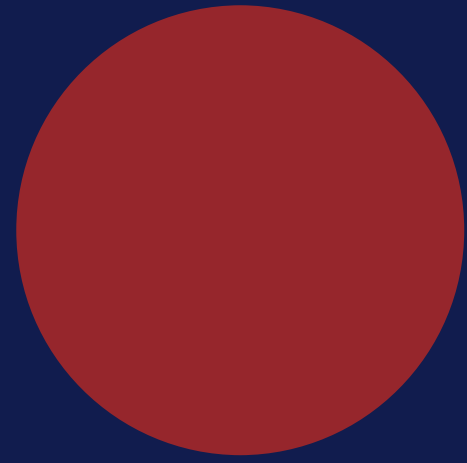
Mitigation Assessment Program Triumphs & Turbulences

Triumphs

- MATRX has been well received by both internal and external stakeholders
- Results to date have been shared with leadership and our Board of Trustees
- Results have driven additional discussion around priority risks
- Adaptability of the tool to capture additional detail on mitigation strategies

Turbulences

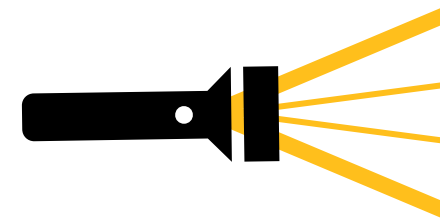
- Lengthier process than originally anticipated
- Challenges in identifying stakeholders and mitigation strategies for risks that do not have existing affinity groups



Influence of Mitigation Assessment Data

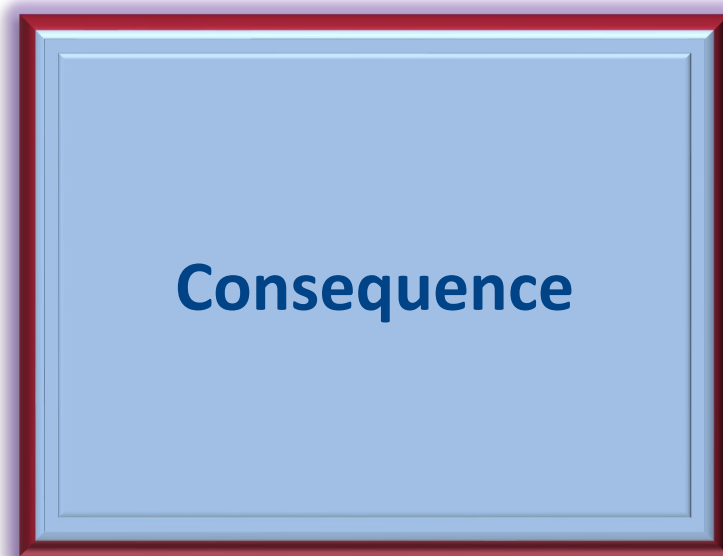
ERM Data Empowers UMass to Better Understand & Prioritize Risk

Data gathered through the assessment of both risk and risk mitigation strategies enables UMass to contemplate risk through multiple viewpoints.



Spotlight: Consequence Categories

Consequence categories assists UMass in understanding how risk affects the University and how effective mitigation strategies are in reducing exposure. These are evaluated for six categories of impact:



- Operations/ Service Disruption
- Financial
- Legal/ Compliance
- Workforce
- Reputation
- Life Safety



Operations Consequence Category

Risk	FY22 Risk Assessment Assessed Rating	FY23 Mitigation Assessment Assessed Rating (Average)
Enrollment	High	Neutral
Information Security	Medium	Moderate
Financial Sustainability	Medium	Moderate
Facilities and Deferred Maintenance	Medium	Moderate
Student Health & Mental Health Support	Negligible	Neutral
Vendor Risk Management	Medium	Moderate
Attract, Recruit, Retain Faculty & Staff	Medium	Neutral
International Activities	Medium	Neutral
Information Privacy	Medium	Moderate
Diversity, Equity, Inclusion & Accessibility	Negligible	Neutral

Risk Exposure	Mitigation Strat. Impact
Negligible	Significant
Low	Moderate
Medium	Neutral
High	Adverse

Better (upward arrow) and **Worse** (downward arrow) indicating the direction of risk exposure change.



Legal/Compliance Consequence Category

Risk	FY22 Risk Assessment Assessed Rating	FY23 Mitigation Assessment Assessed Rating (Average)
Enrollment	Negligible	Neutral
Information Security	High	Significant
Financial Sustainability	Low	Moderate
Facilities and Deferred Maintenance	Medium	Moderate
Student Health & Mental Health Support	Medium	Moderate
Vendor Risk Management	Medium	Significant
Attract, Recruit, Retain Faculty & Staff	Low	Moderate
International Activities	High	Moderate
Information Privacy	Medium	Moderate
Diversity, Equity, Inclusion & Accessibility	Medium	Moderate

Risk Exposure	Mitigation Strat. Impact
Negligible	Significant
Low	Moderate
Medium	Neutral
High	Adverse

Better (upward arrow) and **Worse** (downward arrow) indicate the direction of change from the top row to the bottom row.



Reputation Consequence Category

Risk	Assessed Reputation Risk Exposure	Impact of Assessed Mitigation Strategies on Reputation Exposure
Enrollment	High	Neutral
Information Security	Medium	Moderate
Financial Sustainability	High	Neutral
Facilities and Deferred Maintenance	Low	Neutral
Student Health & Mental Health Support	Medium	Moderate
Vendor Risk Management	Low	Neutral
Attract, Recruit, Retain Faculty & Staff	Medium	Moderate
International Activities	Medium	Neutral
Information Privacy	Medium	Moderate
Diversity, Equity, Inclusion & Accessibility	Medium	Moderate

Risk Exposure	Mitigation Strat. Impact
Negligible	Significant
Low	Moderate
Medium	Neutral
High	Adverse

Better

Worse

MITIGATION ASSESSMENT'S INFLUENCE ON RISK ASSESSMENT PROCESS

- Influenced ERM Executive Committee discussion on Urgency Rating
 - Are we satisfied with where we are, or do we need to continue to prioritize?
 - Does not mean mitigation stops
- Identified risks that need to be reviewed with more granularity
 - Added sub-elements

FY2024 Risk Assessment: International Activities

FY23 Mitigation Assessment



FY24 Risk Assessment

Risk Name	Risk Definition	Likelihood	Consequence						Urgency
			Operations	Financial	Legal/ Compliance	Workforce	Reputation	Life Safety	
International Activities	Inability to effectively implement a consistent approach across to the University's international activities across the system, including travel, devices and data, students, employment, trade and sanctions, and business engagements.	Certain	Low	Low	Med.	Low	Med.	Neg.	Moderate
University Travel		Certain	Low	Neg.	Low	Low	Med.	High	
Devices, Data and Property Management		Certain	Med.	Low	Med.	Low	Med.	Neg.	
Students		Certain	Low	Low	Med.	Low	High	Neg.	
Employment in US		Certain	Med.	Low	Low	Med.	Med.	Neg.	
Employment outside US		Certain	Low	Neg.	Med.	Neg.	Low	Neg.	
Trade and Sanctions Compliance		Certain	Med.	Low	Med.	Neg.	Medium	Neg.	
Business Engagements		Certain	Low	Low	Med.	Neg.	Low	Neg.	

FY2024 Risk Assessment: Facilities and Deferred Maintenance

FY23 Mitigation Assessment

FY22 Assessed Inherent Risk

FY23 Assessed Residual Risk

Lowest Possible Residual Risk



FY24 Risk Assessment

Risk Name	Risk Definition	Likelihood	Consequence						FY22 Urgency	FY24 Urgency
			Ops	Fin	Lgl/ Cmpl	Wrkfrc	Rep.	Life Safety		
Facilities and Deferred Maintenance	Inability to maintain facilities, including the prioritization of ongoing and deferred maintenance, and/or develop facilities and infrastructure to attract and retain students, staff and faculty, and to support critical research.	Certain	Med.	High	Med.	Low	Low	Low	Moderate	High

FY2024 Systemwide Risk Registry

FY24 Rank	Risk	FY22
1	Enrollment	1
2	Information Security	2
3	Facilities and Deferred Maintenance	4
4	Financial Sustainability	3
5	Student Health & Mental Health Support	5
6	Artificial Intelligence	New
7	International Activities	8
8	Research	15
9	Diversity, Equity, Inclusion and Accessibility	10
10	Attract, Recruit, Retain Faculty and Staff	7

FY24 Rank	Risk	FY22
11	Information Privacy	9
12	All Hazards Planning & Response Capabilities	11
13	Labor Relations	13
14	Data Management	14
15	Vendor Risk Management	6
16	Sexual Assault Policies & Response Procedures	17
17	NCAA Regulations	27
18	IT Disaster Recovery	18
19	Continuity Planning	19
20	Environmental Health, Public Health, & Safety Regulations	20

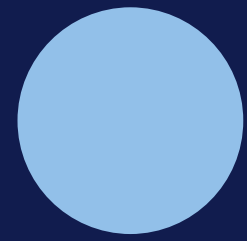
FY24 Rank	Risk	FY22
21	Alcohol and Substance Abuse	21
22	Fraud, Waste, and Abuse	24
23	Crisis Communications	23
24	Uninsured Loss	25
25	Multi-State Payroll Tax	12
26	Multi-State Business Tax	16
27	Employment Laws and Regulations	26
28	Policies and Procedures Regarding Minors on Campus	28
29	Academic Quality and Standards	29
30	Oversight of Student Organizations	30

■ Priority Risks



Conclusion & Take Aways

- Aligning assessment of risk mitigation strategies to risk assessment methodology allows for contextual comparison of risk exposure and risk mitigation
- Transparency on risk mitigation strategies and visibility on progress in reducing risk exposure is empowering
- Volume of mitigation strategies have intuitively been implemented around highest areas of risk exposure
- ERM can be a cornerstone for creating risk-informed priorities and strategies



Thank you for attending!
Please contact us with follow-up:

Christine Packard

Assistant Vice President
Enterprise Risk Management
cpackard@umassp.edu

Olivia Watson

Analyst
Enterprise Risk Management
owatson@umassp.edu

University of Massachusetts President's Office